

I-Series Medical Cart Line

Isolation Cart

The I-Series Isolation Cart provides ample drawer space to store and organize all of your isolation supplies, from gloves to gowns. Smooth panels, work surface and seamless drawers promote simple cleaning for infection control.

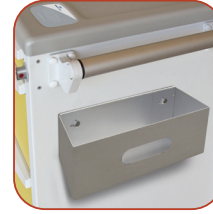
I-Series is constructed of lightweight aluminum panels, sturdy internal frame, and premium drawer slides to ensure long-term value and durability. Drawers open fully allowing easy access to contents in the rear, and stay closed when the cart is in motion. Available in multiple heights to suit your facility's unique needs.



Accessories & Options



Cart Handle



Glove Dispenser



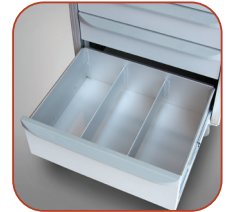
Waste Container w/Lid



Sharps Container



Cart I.D. Labels



Flexible Dividers

Contact Capsa to inquire about additional Accessories & Options

Cart Specifications

	Surface Height	Depth	Width
Standard	43.5" / 111 cm	24" / 61 cm	31" / 79 cm
Intermediate	40.5" / 103 cm	24" / 61 cm	31" / 79 cm
Compact	37.5" / 95 cm	24" / 61 cm	31" / 79 cm

Drawer Specifications

	Height	Depth	Width
Three Inch	3" / 7.6 cm	17.25" / 44 cm	24" / 61cm
Six Inch	6.3" / 16 cm	17.25" / 44 cm	24" / 61cm
Ten Inch	9.6" / 24 cm	17.25" / 44 cm	24" / 61cm

Isolation Cart Features

- Durable aluminum cabinet surrounding a sturdy integrated frame
- Full-width drawer handles
- Seamless drawers & antimicrobial surfaces for easy cleaning
- Wide selection of accessories and organization systems
- Expansive work area with optional slide-out work surface
- Delivered fully assembled, no tools required
- 10-year limited warranty

Model Options



Standard



Intermediate



Compact

Specifications, availability & components are subject to change without notice.