

# Avalo® Series Medical Cart Line Med/Surg Cart

The Avalo Series Med/Surg Cart meets the demanding requirements of an ever-changing hospital environment. Choose from three standard models that feature an arrangement of 3", 6", and 10" drawers, and customizable drawer divider kits for smart organization of medication and supplies.

A choice of lock systems ensures security and full complement of accessory options permit cart customization for workflow efficiency. The durable frame and spread caster position ensure stability, making the cart easy to move and control, while supporting the latest technology solutions and monitoring equipment.



## Accessories & Options



Bulk Storage Bins



Sharps Container



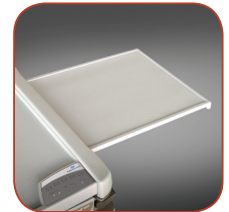
Supply Drawer Divider Kit



Waste Container



Tilt Bin Organizer



Slide-Out Shelf

[Contact Capsa to inquire about additional Accessories & Options](#)

## Cart Specifications

	Surface Height	Depth	Width
<b>Standard</b>	43.5" / 111 cm	24" / 61 cm	31" / 79 cm
<b>Intermediate</b>	39.5" / 100 cm	24" / 61 cm	31" / 79 cm
<b>Compact</b>	36" / 91 cm	24" / 61 cm	31" / 79 cm

## Drawer Specifications

	Height	Depth	Width
<b>Three Inch</b>	3" / 7.6 cm	17.5" / 45 cm	21.5" / 55 cm
<b>Six Inch</b>	6.25" / 16 cm	17.5" / 45 cm	21.5" / 55 cm
<b>Ten Inch</b>	10" / 25 cm	17.5" / 45 cm	21.5" / 55 cm

## Med/Surg Cart Features

- Precision-welded steel frame with durable, high-impact panels
- Lightweight design and profile simplify movement and steering
- Seamless drawer trays are easy-to-clean and feature premium, self-closing drawer slides
- Wide selection of accessories and organization systems
- Expansive work area with optional slide-out work surface
- Delivered fully assembled, no tools required
- 10-year limited warranty

## Model Options



Standard



Intermediate



Compact

*Specifications, availability & components are subject to change without notice.*