

# AC Series Medication Cart



Model ACS

Model ACM

Model ACXL

	Standard Height		Compact Height	
<b>H</b>	43"	110 cm	39.5"	100 cm
<b>D</b>	24"	61 cm	24"	61 cm
<b>W</b>	25.5"	65 cm	25.5"	65 cm

	Standard Height		Compact Height	
<b>H</b>	43"	110 cm	39.5"	100 cm
<b>D</b>	24"	61 cm	24"	61 cm
<b>W</b>	37.75"	96 cm	37.75"	96 cm

	Standard Height (only)	
<b>H</b>	43"	110 cm
<b>D</b>	24"	61 cm
<b>W</b>	48.5"	123 cm



Main Drawers

	3" Main		6" Main		10" Main	
<b>H</b>	3"	7.6 cm	6.3"	16 cm	9.6"	24 cm
<b>D</b>	14.7"	37 cm	14.7"	37 cm	14.7"	37 cm
<b>W</b>	16.5"	42 cm	16.5"	42 cm	16.5"	42 cm



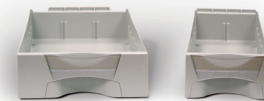
Utility Drawers

	3" Utility		6" Utility		10" Utility	
<b>H</b>	3"	7.6 cm	6.3"	16 cm	9.6"	24 cm
<b>D</b>	14.7"	37 cm	14.7"	37 cm	14.7"	37 cm
<b>W</b>	7.55"	19 cm	7.55"	19 cm	7.55"	19 cm



Cassettes

	2-Tier		3-Tier	
<b>H</b>	6.6"	16.8 cm	9.9"	25.1 cm
<b>D</b>	16.25"	41.3 cm	16.25"	41.3 cm
<b>W</b>	18"	45.7 cm	18"	45.7 cm



Bins

	8" Bin		5" Inch Bin	
<b>H</b>	2.75"	7 cm	2.75"	7 cm
<b>D</b>	12.5"	31.75 cm	12.5"	31.75 cm
<b>W</b>	8"	20.3 cm	5.25"	13.3 cm

