



NEXSYSADC™ AUTOMATED DISPENSING TECHNOLOGY



CAPSAHEALTHCARE

Surgery Centers & Clinics

Practical Automated Dispensing Technology

Capsa Healthcare brings you the next generation of medication management technology. NexsysADC is the simplest, most secure system to fully control the onsite storage of medications and supplies, but at a fraction of the price of alternative automated dispensing cabinets. Your facility benefits from a ROI without compromising safety, security, or operational flexibility. And with tighter control of your onhand narcotics inventory, you will minimize concerns about internal diversion or DEA audits.



4T Countertop Cabinet

Main Cabinet

NexsysADC is where automated dispensing meets inventive, common-sense design that provides configurable security and storage for a host of healthcare environments.

- Extended care/nursing homes
- Critical access hospitals
- Surgery centers
- Residential care facilities
- Rehab & psych environments
- Animal health & dental clinics
- Hospice
- Education simulation



The Intelligent Choice for Safeguarding Sensitive Meds

The NexsysADC Difference

- **Peace Of Mind:** Make your facility defensible against potential diversion, inventory discrepancies, and DEA audits.
- **Medication Security:** Innovative solution to manage the restocking and access of controls and high-value medications and supplies, with built-in tamper-evidence.
- **Fast ROI Without Compromise:** Your Capsa Representative will run a detailed analysis to show how surgery centers or clinics can deploy NexsysADC at a cost much lower than alternative dispensing cabinet systems.
- **Configurable For Each Facility:** We custom-build each unit for your facility's specific needs, based on your medication list and patient population.
- **Streamlined Replenishment & Inventory:** NexsysADC identifies what medications need to be restocked. The flexible replenishment process saves time, reduces inventory turns, and prevents diversion.



Every process with NexsysADC is designed to be quick, step-saving, and trackable.



Intuitive, guided access technology assures simplicity and accuracy during the dispensing process, especially controlled and high-value medications.

Guided Access With 'CAM' Technology

NexsysADC uses "guided access" with illuminated indicators and on-screen prompts. This ensures the clinical staff knows the exact location of the requested medication. Guided access technology also directs pharmacy restocking and inventory controls.

The NexsysADC Controlled Access Module (CAM)

Controlled Access Modules, or CAMs, are at the heart of NexsysADC operation for controlled and high-value medications.



For medications held in a CAM, the CAM automatically opens, and the correct med cell is ID'd with a pick-to-light prompt and opened lid. NexsysADC includes built-in alerts against tampering.



Scalable cabinet design permits unique set-up with a mix of CAMs, adjustable open-cell medication bins for routine meds, and bulk supply drawers.



Choose from 12 standard CAM configurations for different medication sizes and quantities (see p. 6-7). CAMs hold 12-25 SKUs in individual cells. Each CAM uses pick-to-light identification and secure locking lids.



Each NexsysADC main cabinet can accommodate up to 10 CAMs; 4T cabinets accommodate up to 4 CAMs.

Three Storage Methods for Meds & Supplies

Controlled Access Modules (CAMs)

Controlled and high-value medications are safely guarded in CAMs, with 12 configurations to accommodate different medication sizes and quantities. Each CAM holds up to 25 SKUs in individual locking cells (see p. 6-7).



Open Cell Medication Bins

Routine meds and non-controlled doses are efficiently managed in dividable open-matrix bins. Even here, guided prompts direct the nurse to the bin and med location. Bins can be set up to accommodate a wide variety of package types and sizes.



- Bin depth: 5 1/2"
- Available in 2-Tier (6 bins) or 3-Tier (9 bins)
- Self-configure each bin up to 14 positions
- Bins lock to the row (tier) level with pick-to-light prompts; all other rows remain locked
- Organize each bin with the NexsysADC Cabinet Configurator software

Supply Drawers

Bulk supplies and larger items are stowed neatly in divided supply drawers. Drawers are available in three depths and each drawer can be configured to hold 1-16 SKUs. Drawers unlock, and an illuminated prompt guides the nurse to the proper location.



- Available in three drawer depths: 3" drawer (one row), 6" drawer (two rows), or 10" drawer (three rows)
- Self-configure each drawer up to 24 compartments
- 10" drawer can accommodate med blister cards (full or half size)
- Supply drawers are secure until item is requested; all other drawers and CAMs remain locked when accessed



NexsysADC™

Flexible Configurations

Capsa Helps You Arrange The Ideal ADC

Every facility's patient population and medication management needs are unique. That's why NexsysADC was designed to be highly adaptable and scalable to suit any patient group, security level, and budget. Your Capsa Representative will run a detailed analysis to identify the ideal NexsysADC configuration for each of your facilities.

Start Here With These Popular Configurations ...



Manage a **Low** number of controls + high number of routine meds & supplies

Example Shown: 1 CAM to secure up to 25 controls. Two 3-tier medication bin cassettes, 10" supply drawer.

Maximum # SKUs 287



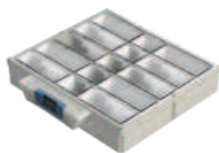
Manage a **Moderate** number of controls + high number of routine meds & supplies

Example Shown: 2 CAMs to secure up to 50 controls. 2-tier and 3-tier medication bin cassettes, 10" supply drawer.

Maximum # SKUs 238

Configure your own at

CAM Configuration Options



CAM #207034
15 SKUs



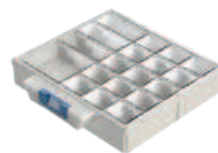
CAM #207035
25 SKUs



CAM #207036
20 SKUs



CAM #207038
22 SKUs



CAM #207039
19 SKUs



CAM #207040
18 SKUs

CAM Cell Specifications

1x1 (2.76" w x 2.37" d x 2" h) **1x2** (5.78" w x 2.37" d x 2" h) **2x2** (5.78" w x 4.86" d x 2" h)



Flexible Configurations

Some of the important factors that are considered when configuring a NexsysADC cabinet are:

- Inventory to store in the unit, including quantity
- Number of beds
- Patient population/facility type
- Size of items to store (e.g., IV, high-value surgical supplies, dosage forms)
- Security level needs/options

Or Let Us Design To Your Budget



Manage a **Higher** number of controls + lower number of routine meds & supplies

Example Shown:
4 CAMs to secure up to 100 controls.
3-tier medication bin cassettes, 10" supply drawer.

Maximum # SKUs 352



1-CAM (NXTC-X1-C01-D000)

- Up to 25 locking cells
- Holds up to 150 SKUs



2-CAM (NXTC-X2-C10-D000)

- Up to 50 locking cells
- Holds up to 134 SKUs



4-CAM (NXTC-X4-C00-D000)

- Up to 100 locking cells
- Holds up to 100 SKUs

CapsaHealthcare.com



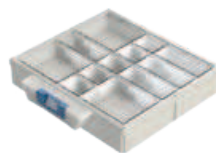
CAM #207041
19 SKUs



CAM #207042
16 SKUs



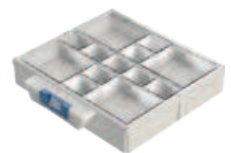
CAM #207043
15 SKUs



CAM #207044
12 SKUs



CAM #207045
11 SKUs

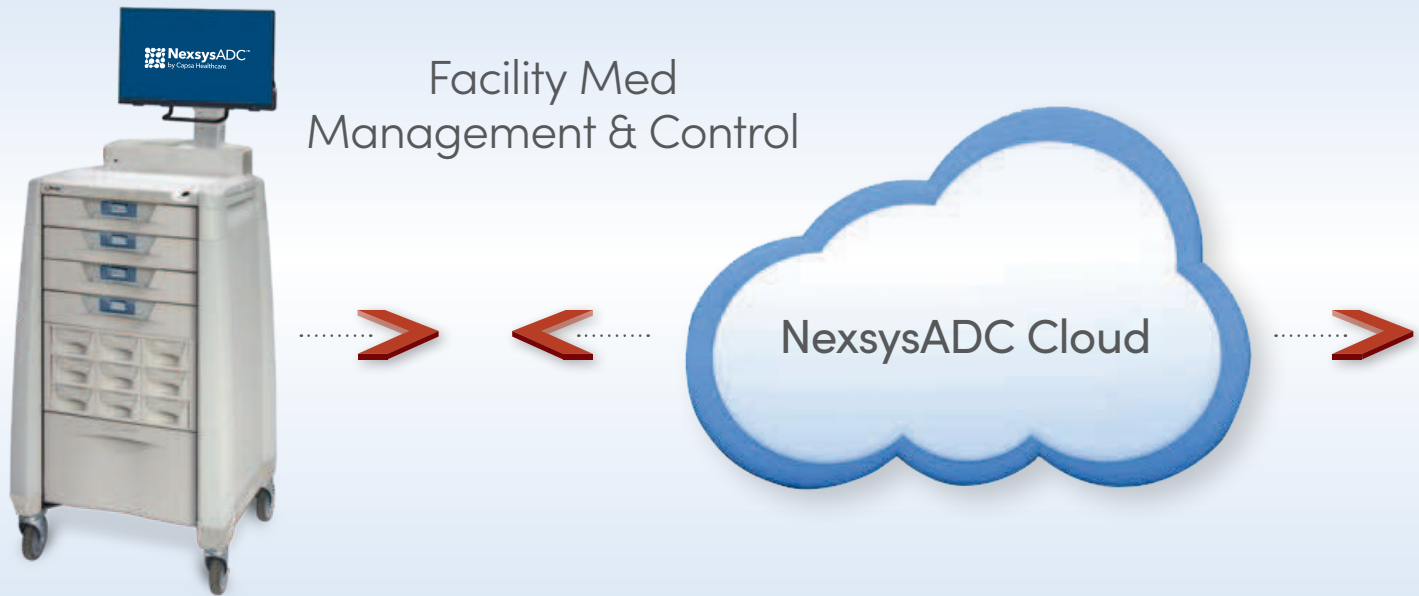


CAM #207046
13 SKUs

Cloud-Based For Continuity

Sub-head here?

NexsysADC is enabled by a robust cloud solution for superior information management and maximum uptime. Accessible from anywhere at anytime, the NexsysADC web portal provides access to all your system management functions.



NexsysADC Software

The NexsysADC operating system is so straightforward that your clinical staff is quickly up-and-running.

Clear Navigation

- Flexible to accommodate multiple workflow models
- Logical organization
- Action List prompts required tasks of users

Expedited Workflow

- The simplicity of NexsysADC means less time on the computer, more time with patients
- Clinicians can log in by typing in their User Name and PIN, or utilizing the prox card and/or biometric functionality
- Minimal steps to select a patient and medication for maximum nurse efficiency
- Large 22" touch screen monitor

Safety At Every Step

- Multiple safeguards to ensure only the correct medication is chosen
- Unauthorized access is prevented

Uncompromising Data Security

Meets the highest standards for cyber security and HIPAA compliance.

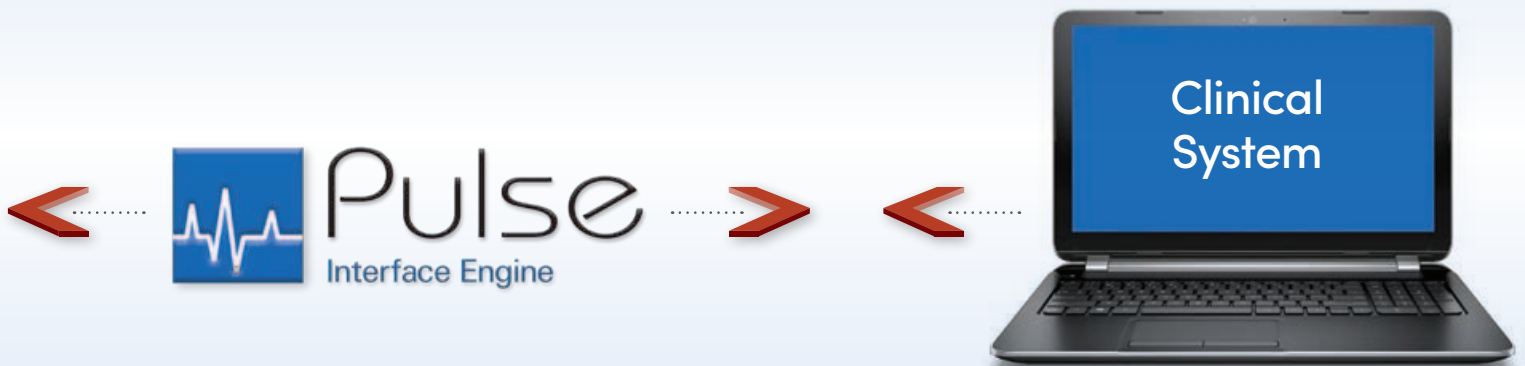


Interfacing

All Systems Networked

Patient medication transactions and administrative functions are captured by the NexsysADC system, such as access activity and user reporting, charge capture, and restock management. Capsa ensures the seamless and secure flow of information.

Clinical System



Interfaced With Your Clinical Management System

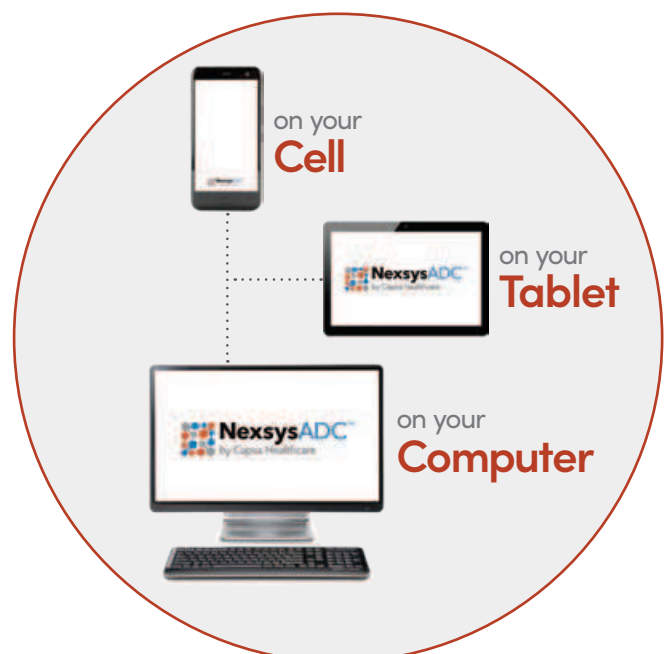
NexsysADC interfaces with your computer management system with our robust 2-way Pulse Interface Engine (HL7). Every step of the process is connected:

- **Patient Sync** for true patient validation that reduces the chance of medication errors.
- **Patient Order Sync** that only allows dispensed medications against approved orders.
- **Billing Sync** that sends the charges electronically to the pharmacy system to eliminate manual billing and avoid potential revenue loss.

EMR/EHR Interface

NexsysADC is capable of interfacing with most electronic patient record systems. Ask your Capsa Representative for details.

NexsysADC Portal Access is Always With You



Replenishment & Inventory Security

You have complete oversight of the inventory inside each NexsysADC cabinet. This vital information is accessible 24/7, anywhere via cloud connection.

- Full medications stock list
- Meds near or below par level
- Meds near or out of expiration, or inactive

Tiered Replenishment Process

Option 1:

Onsite Refilling

Refill your cabinet's stock when inventory arrives at your facility. The convenient Prestock Option can be employed to use a NexsysADC Action List to guide the exact replacement of medications in either a CAM or a medication bin.



*Option 1
Manual Onsite
Refilling*

Option 2:

Prestock

(Maximize Restocking Efficiency)

Use the NexsysADC online portal to create a restock action item, addressing all items to be restocked (assign quantities, update lot and expiration date, location). An icon will display on the cabinet screen for an approved user to complete the guided restocking onsite.



*Option 2
Prestock*

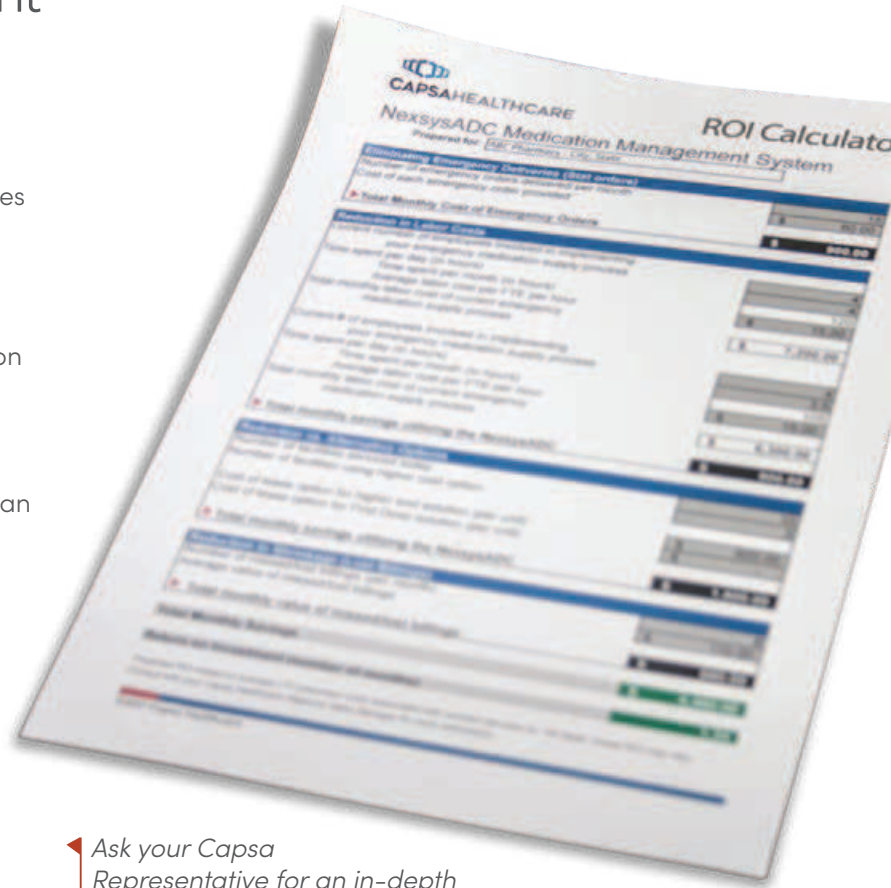


NexsysADC™

An Intelligent Investment

NexsysADC delivers an accelerated ROI in months, not years. Here are just a few ways NexsysADC improves revenue flow, eliminates unnecessary expenses, and from Day 1 becomes an indispensable part of your medication management strategy.

- NexsysADC guards against the high time and money costs should a DEA examination be necessary.
- NexsysADC eliminates courier runs for stat doses.
- NexsysADC main cabinet costs **40% less** than traditional ADC systems, and countertop-sized 4T costs **50-60% less**.
- NexsysADC directly impacts a facility's **#1 focus** - the delivery of superb patient care.



Ask your Capsa Representative for an in-depth business analysis with the NexsysADC ROI calculator.

Implementation, Training, Support

Capsa Healthcare makes the planning, installation and training of NexsysADC simple and straightforward. Our Support team focuses on the unique needs of each user, from management to end user. And once installed, Capsa provides a dedicated NexsysADC Support Hotline.

- High-detail project management
- On-site pharmacy training
- On-site facility training
- 24/7 dedicated support

The best way to experience the innovative NexsysADC is to contact your Capsa Representative for a demonstration.





Cabinet Specifications

Main Cabinet Specifications

- Cabinet size 25"(w) 24"(d) 43"(h)
- Adjustable 22" touchscreen monitor; top of monitor 67"(h) maximum
- Work surface height 43"
- Capacity up to 400 SKUs (highly configurable)
- 145 lbs (empty) up to 350 lbs (with 10 CAMs)
- UL tested & approved
- USA Patents: 10,045,899; 10,045,900

4T Specifications

- Cabinet size 23.5"(w) 20.4"(d) 17.7"(h)
- Adjustable 14" touchscreen monitor (total unit height 26")
- Capacity up to 150 SKUs (highly configurable)
- Weight 100 lbs (empty)
- Metal mounting plate, hardware, template included

Both Models:

- Power requirements: Standard dedicated universal outlet
- 2D barcode scanner and prox card reader
- Biometric finger scanner
- Windows 10 operating system
- Ethernet, WiFi networking
- Built-in uninterrupted power supply

Optional Accessories



Stationary Leg Kit



Wall Lock Assembly



Slide-Out Surface
(standard on main cabinet)



Certified ISO
27001:2013



Certified ISO
9001:2015



www.CapsaHealthcare.com | 800.437.6633

4253 NE 189th Avenue
Portland, OR 97230