

Cabinet Configurator

NexsysADC™

Pharmacy/City _____

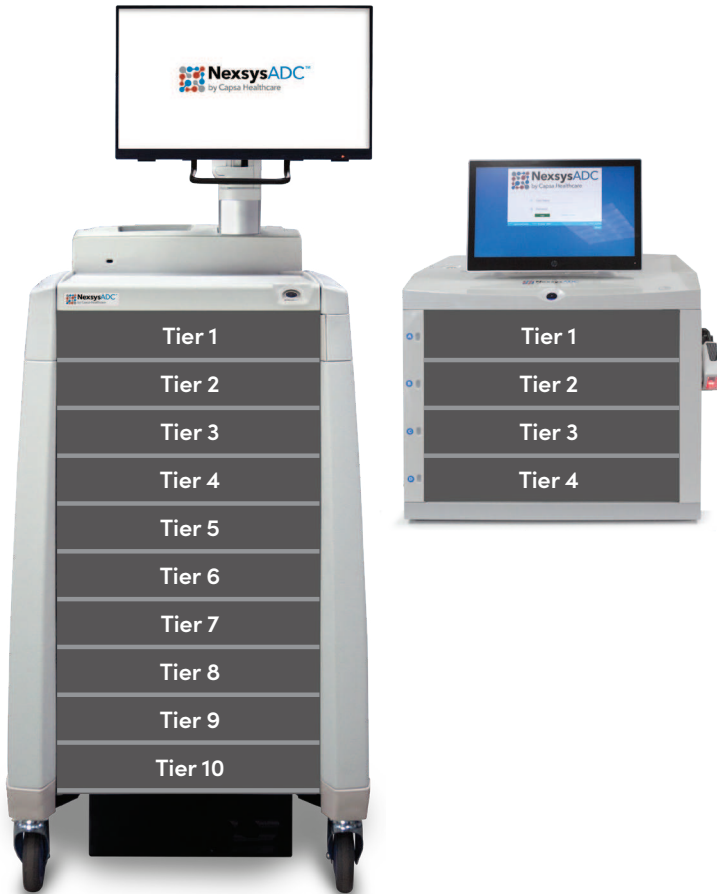
Facility/City _____

Proposed Operational Date _____

The NexsysADC cabinet affords flexibility for a planned medication formulary and supplies inventory in each unit.

The main NexsysADC cabinet offers 10 tiers of storage, and the 4T countertop cabinet offers four tiers.

Starting with Tier 1 and working downward, define the unit configuration using the storage options on the right.



Storage Options

- Main Cabinet (10 tiers)
- 4T Countertop (4 tiers)

CAM Drawer - Requires (1) vertical tier



Circle to indicate tier position(s)

1 2 3 4 5 6 7 8 9 10

Tier	CAM Cell Configuration SKU*	Tier	CAM Cell Configuration SKU*
1		6	
2		7	
3		8	
4		9	
5		10	

* See reverse side for CAM SKUs

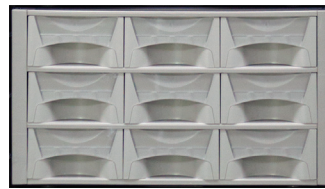
Open Cell Bin (6) - Requires (2) vertical tiers



Circle to indicate tier position(s)

1 2 3 4 5 6 7 8 9 10

Open Cell Bin (9) - Requires (3) vertical tiers



Circle to indicate tier position(s)

1 2 3 4 5 6 7 8 9 10

3" Supply Drawer - Requires (1) vertical tier



Circle to indicate tier position(s)

1 2 3 4 5 6 7 8 9 10

6" Supply Drawer - Requires (2) vertical tiers



Circle to indicate tier position(s)

1 2 3 4 5 6 7 8 9 10

10" Supply Drawer - Requires (3) vertical tiers



Circle to indicate tier position(s)

1 2 3 4 5 6 7 8 9 10

For punch card use?

Yes No

NexsysADC CAM Cell Configuration Options



CAM #207035 = 25 SKUs



CAM #207039 = 19 SKUs



CAM #207043 = 15 SKUs



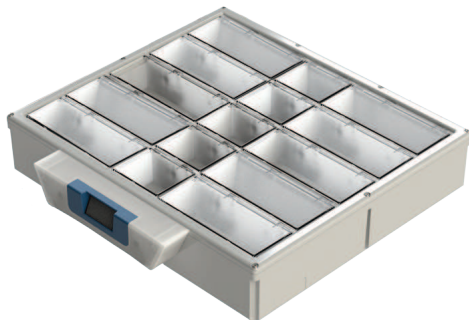
CAM #207036 = 20 SKUs



CAM #207040 = 18 SKUs



CAM #207044 = 12 SKUs



CAM #207034 = 15 SKUs



CAM #207041 = 19 SKUs



CAM #207045 = 11 SKUs



CAM #207038 = 22 SKUs



CAM #207042 = 16 SKUs



CAM #207046 = 13 SKUs

CAM Cell Specifications

1 x 1 (2.76" w x 2.37" d x 2" h) **1 x 2** (5.78" w x 2.37" d x 2" h) **2 x 2** (5.78" w x 4.86" d x 2" h)